

SOKETLER



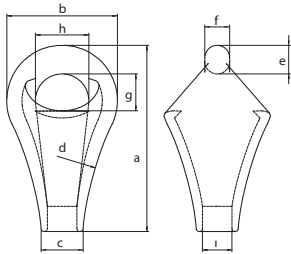
Uygulamalar:

Soketler çelik halatları sabit bir noktaya bağlamak için kullanılır. Ankraj sistemleri, köprü sistemleri, vinç sistemleri, mebran uygulamaları vb. işlemlerde kullanılır.

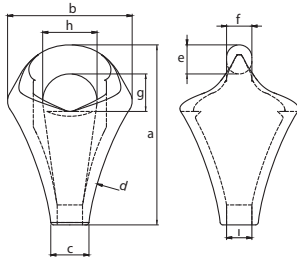
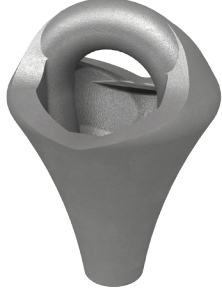
- ★ Halat çapına uygun soket seçilmelidir.
- ★ Kullanmadan önce kati suretle çatlak kontrolü yapılmalıdır.
- ★ Çatlak ve kırık soketler kullanmamalıdır.
- ★ Farklı ebattaki parçalar karıştırarak kullanılmamalıdır.
- ★ Bağlama noktasına ve yöntemine dikkat edilmelidir.



ARMUT SOKET

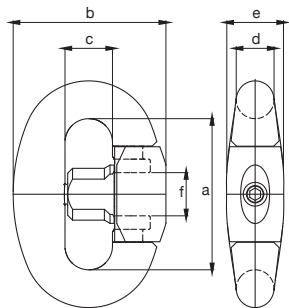


Soket No	Halat Çapı (mm)	Güvenli Çalışma Yüğü (ton)	Minimum Kopma Yüğü (ton)	a (mm)	b (mm)	c (mm)	d (mm)	e (mm)	f (mm)	g (mm)	h (mm)	i (mm)	Ağırlık (kg)
2	12 - 13	2,00	14,0	95,0	56,0	25,0	195	15,5	13,5	22,0	25,0	16,0	0,40
3	14 - 15	2,50	17,5	109	64,0	28,0	220	17,5	15,5	24,0	29,0	19,0	0,60
4	16 - 17	3,00	22,5	123	70,0	31,0	220	19,5	17,5	26,0	31,0	21,0	0,90
5	18 - 19	4,50	27,5	135	84,0	33,0	245	21,0	19,0	30,0	42,0	23,0	1,30
6	20 - 21	5,00	35,0	152	84,0	36,0	310	23,0	21,0	33,0	38,0	26,0	1,50
7	22 - 24	7,00	42,5	166	100	40,0	310	26,0	23,0	37,0	48,0	30,0	2,20
8	25 - 27	8,00	52,5	186	100	43,0	350	28,0	25,0	39,0	44,0	32,0	2,40
9	28 - 30	11,0	70,0	202	120	45,0	350	32,0	28,0	40,0	58,0	35,0	3,70
10	31 - 33	13,0	85,0	222	120	52,0	445	32,0	28,5	45,0	56,0	39,0	4,10
11	34 - 36	15,0	95,0	239	142	55,0	445	36,0	31,5	50,0	70,0	42,0	5,90
12	37 - 39	17,0	110	264	142	60,0	495	39,0	34,5	51,0	64,0	45,0	6,70
13	40 - 42	21,0	125	285	166	63,0	555	43,0	36,5	59,0	80,0	48,0	9,30
14	43 - 45	26,0	155	312	166	68,0	595	47,0	40,0	62,0	72,0	51,0	10,5
15	46 - 48	30,0	180	337	170	75,0	595	51,0	44,0	66,0	68,0	55,0	12,1
17	52 - 56	42,5	240	400	220	84,0	880	60,0	54,0	75,0	90,0	63,0	21,3



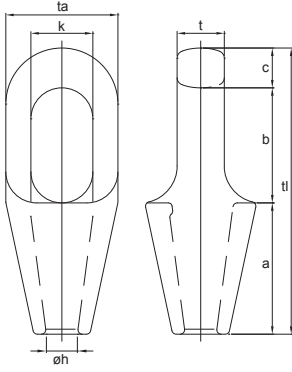
ARMUT SOKET - S TİPİ

Soket No	Halat Çapı (mm)	Çalışma Yüğü (kg)	Kopma Yüğü (kg)	a (mm)	b (mm)	c (mm)	d (mm)	e (mm)	f (mm)	g (mm)	h (mm)	i (mm)	Ağırlık (kg)
924	22 - 24	11.000	70.000	192	133	40,0	325	31,0	27,0	40,0	58,0	29,0	3,80
1026	25 - 27	13.000	85.000	212	143	43,0	375	35,0	30,5	43,0	60,0	32,0	4,80
1130	28 - 30	15.000	95.000	239	156	45,0	400	36,0	31,5	50,0	70,0	35,0	5,90
1232	31 - 33	17.000	110.000	249	165	52,0	425	39,0	34,5	57,0	72,0	38,0	7,00
1336	34 - 36	21.000	125.000	257	184	55,0	450	43,0	36,5	60,0	80,0	42,0	9,30
1440	37 - 40	26.000	155.000	297	192	60,0	475	47,0	40,0	62,0	80,0	46,0	11,6
3221	42 - 44	32.500	189.000	314	204	66,0	425	53,0	46,0	70,0	80,0	49,0	13,8
1548	46 - 48	30.000	180.000	329	192	74,0	575	51,0	44,0	66,0	80,0	57,0	12,4
1648	46 - 48	36.000	215.000	343	218	70,0	500	56,0	50,0	75,0	90,0	54,0	15,0



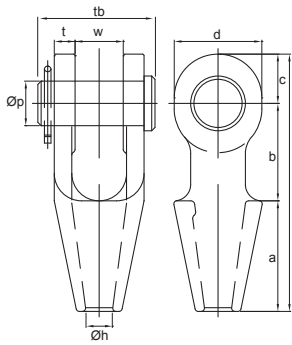
ARMUT SOKET KİLİDİ

Soket No	Çalışma Yüğü (kg)	Kopma Yüğü (kg)	a (mm)	b (mm)	c (mm)	d (mm)	e (mm)	f (mm)	Ağırlık (kg)
4	3.000	25.000	76,0	76,0	24,5	19,0	30,0	21,0	0,90
5	4.500	33.000	84,0	84,0	27,0	21,0	32,5	23,0	1,20
6	5.000	37.500	92,0	92,0	29,5	23,0	35,0	25,0	1,50
7	7.000	49.000	100	100	32,0	25,0	38,0	28,0	2,00
8	8.000	54.000	108	108	34,5	27,0	40,5	31,0	2,50
9	9.500	60.000	116	116	37,0	29,0	43,5	34,0	3,10
10	12.000	75.000	128	128	40,5	32,0	48,0	37,0	4,40
11	15.000	95.000	140	140	44,0	35,0	53,0	40,0	5,70
12	17.000	110.000	152	152	47,5	38,0	57,0	43,0	7,20
13	21.000	135.000	164	164	51,0	41,0	61,5	46,0	8,70
14	26.000	160.000	176	173	54,0	44,0	66,0	50,0	11,0
15	30.000	175.000	188	188	58,0	47,0	70,5	52,0	13,5
17	42.500	260.000	222	222	68,0	56,0	84,0	62,0	23,0



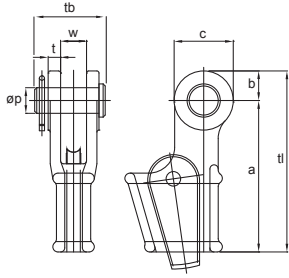
KAPALI AĞIZ TUTYALI SOKET

Halat Çapı (mm)	Minimum Kopma Yüğü (ton)	a (mm)	b (mm)	c (mm)	Ø h (mm)	k (mm)	t (mm)	ta (mm)	tl (mm)	Ağırlık (kg)
6 - 7	8,00	50,0	40,0	11,0	9,00	22,0	13,0	37,0	101	0,30
8 - 10	12,0	57,0	48,0	14,0	13,0	25,0	18,0	43,0	119	0,40
11 - 13	20,0	64,0	59,0	17,5	15,0	30,0	23,0	51,0	140	0,70
14 - 16	25,0	76,0	65,0	21,0	18,0	36,0	26,0	67,0	162	1,40
18 - 19	40,0	89,0	78,0	27,0	22,0	42,0	32,0	76,0	194	2,20
20 - 22	55,0	101	90,0	33,0	25,0	47,0	38,0	92,0	224	3,80
23 - 26	75,0	114	103	36,0	29,0	57,0	44,0	104	253	5,40
27 - 30	90,0	127	116	39,0	33,0	65,0	51,0	114	282	7,00
31 - 36	125	139	130	43,0	39,0	71,0	57,0	126	312	10,0
37 - 39	150	152	155	51,0	42,0	81,0	63,0	136	358	13,0
40 - 42	170	165	171	54,0	45,0	83,0	70,0	146	390	17,0
43 - 48	225	190	198	55,0	52,0	93,0	76,0	171	443	26,0
49 - 54	280	216	224	62,0	59,0	100	82,0	193	502	37,0
55 - 60	360	228	247	73,0	64,0	112	92,0	216	548	50,0
61 - 68	425	248	270	79,0	75,0	140	102	241	597	66,0
69 - 75	460	279	286	79,0	81,0	159	124	273	644	91,0
76 - 80	560	315	298	83,0	88,0	171	133	292	696	117



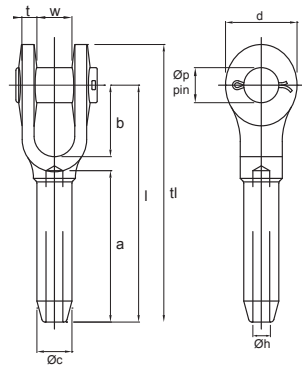
AÇIK AĞIZ TUTYALI SOKET

Halat Çapı (mm)	Minimum Kopma Yüğü (ton)	a (mm)	b (mm)	c (mm)	d (mm)	Ø h (mm)	Ø p (mm)	t (mm)	tl (mm)	tb (mm)	w (mm)	Ağırlık (kg)
6 - 7	8,00	50,0	40,0	19,0	34,0	9,00	16,0	9,00	109	51,0	19,0	0,40
8 - 10	12,0	57,0	45,0	22,0	42,0	13,0	20,0	11,0	124	63,0	21,0	0,70
11 - 13	20,0	64,0	51,0	27,0	50,0	15,0	25,0	12,0	142	67,0	25,0	1,00
14 - 16	25,0	76,0	63,0	32,0	58,0	18,0	30,0	14,0	171	85,0	32,0	1,80
18 - 19	40,0	89,0	76,0	40,0	70,0	22,0	35,0	16,0	205	95,0	38,0	3,00
20 - 22	55,0	101	89,0	45,0	80,0	25,0	41,0	19,0	235	110	44,0	4,60
23 - 26	75,0	114	101	60,0	104	29,0	51,0	22,0	275	128	51,0	8,00
27 - 30	90,0	127	114	65,0	114	33,0	57,0	25,0	306	142	57,0	11,0
31 - 36	125	139	127	72,0	126	39,0	63,0	28,0	338	155	63,0	15,0
37 - 39	150	152	162	80,0	142	42,0	70,0	30,0	394	177	76,0	22,0
40 - 42	170	165	165	88,0	156	45,0	76,0	33,0	418	187	76,0	27,0
43 - 48	225	191	178	100	176	52,0	89,0	39,0	469	215	89,0	41,0
49 - 54	280	216	228	108	194	59,0	95,0	45,0	552	244	101	60,0
55 - 60	360	229	254	120	210	64,0	108	53,0	603	275	113	88,0
61 - 68	425	248	273	133	236	75,0	121	60,0	654	300	127	118
69 - 75	460	279	279	138	240	81,0	127	73,0	696	335	133	155
76 - 80	560	305	286	146	252	88,0	133	76,0	737	355	146	186



KAMALI HALAT SOKETİ

Halat Çapı (mm)	Güvenli Çalışma Yüğü (ton)	a (mm)	b (mm)	c (mm)	Ø p (mm)	t (mm)	tl (mm)	tb (mm)	w (mm)	Ağırlık (kg)
7 - 8	8,00	110	18,0	36,0	16,0	9,00	128	51,0	18,0	0,80
9 - 10	12,0	145	23,0	46,0	21,0	11,0	168	63,0	21,0	1,70
11 - 13	20,0	146	29,0	57,0	25,0	12,0	175	67,0	25,0	2,10
14 - 16	25,0	176	35,0	70,0	30,0	15,0	211	85,0	31,0	4,00
18 - 19	40,0	210	40,0	80,0	35,0	16,0	250	95,0	38,0	7,00
20 - 22	55,0	238	48,0	95,0	41,0	18,0	285	110	44,0	10,0
23 - 26	75,0	275	55,0	110	51,0	22,0	330	128	51,0	15,0
27 - 29	90,0	310	65,0	130	57,0	25,0	375	142	57,0	21,0
30 - 32	110	350	73,0	146	63,0	28,0	423	155	63,0	31,0
34 - 36	125	400	74,0	148	64,0	28,0	474	160	70,0	37,0
37 - 39	150	450	80,0	142	70,0	30,0	530	177	77,0	51,0
40 - 42	170	500	87,0	160	76,0	33,0	587	187	76,0	64,0
43 - 48	225	550	100	186	89,0	39,0	650	215	89,0	96,0
49 - 52	280	640	105	205	95,0	46,0	745	244	101	130
54 - 58	360	660	125	250	108	54,0	785	275	114	180
60 - 68	425	835	135	270	121	60,0	970	300	127	275

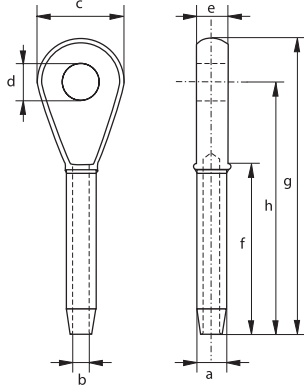


AÇIK AĞIZ BASKI SOKET

Halat Çapı (mm)	Ø c (mm)	Ø h (mm)	Ø p (mm)	b (mm)	tl (mm)	a (mm)	l (mm)	t (mm)	w (mm)	d (mm)	Ağırlık (kg)
6,00	12,7	6,85	17,5	38,0	121	54,0	102	8,00	17,0	35,0	0,25
8,00	19,6	8,65	20,6	44,0	159	81,0	135	10,0	21,0	41,0	0,50
10,0	19,6	10,4	20,6	44,0	159	81,0	135	10,0	21,0	41,0	0,50
11,0	24,9	12,2	25,4	51,0	198	108	169	13,0	25,0	51,0	1,10
13,0	24,9	14,0	25,4	51,0	198	108	169	13,0	25,0	51,0	1,10
14,0	31,8	15,5	30,2	57,0	243	135	206	16,0	32,0	63,0	2,10
16,0	31,8	17,0	30,2	57,0	243	135	206	16,0	32,0	63,0	2,10
19,0	39,4	20,3	35,1	70,0	297	162	254	19,0	38,0	76,0	3,60
22,0	43,2	23,9	41,1	83,0	346	189	295	23,0	44,0	86,0	5,30
25,0	50,5	26,9	51,0	95,0	397	216	340	26,0	51,0	102	8,10
29,0	57,0	30,2	57,0	108	444	243	381	30,0	57,0	114	13,5
32,0	64,5	33,8	63,5	121	494	270	419	30,0	63,0	127	16,4
35,0	71,0	36,8	63,5	133	540	297	460	33,0	63,0	133	21,4
38,0	78,0	40,1	70,0	146	591	324	502	37,0	76,0	146	29,5
44,0	86,0	47,2	89,0	171	689	378	584	43,0	89,0	178	42,2
51,0	100	53,5	95,5	203	798	432	679	46,0	102	203	65,8
57,0	113	59,9	108	171	835	486	705	65,0	114	222	93,5



KAPALI AĞIZ BASKI SOKET



Halat Çapı (mm)	Baskıdan Önceki Ölçü a (mm)	Baskıdan Sonraki Min. Ölçü a (mm)	Baskıdan Sonraki Maks. Ölçü a (mm)	b (mm)	c (mm)	d (mm)	e (mm)	f (mm)	g (mm)	h (mm)	Ağırlık (kg)
6,00	13,0	10,9	11,7	7,00	37,0	19,0	13,0	54,0	111	89,0	0,15
8,00	20,0	17,2	18,0	9,00	43,0	22,0	17,0	81,0	140	114	0,36
10,0	20,0	17,2	18,0	12,0	43,0	22,0	17,0	81,0	140	114	0,35
11,0	25,0	22,0	23,1	12,0	51,0	27,0	22,0	108	176	146	0,66
13,0	25,0	22,0	23,1	14,0	51,0	27,0	22,0	108	176	146	0,63
14,0	32,0	28,3	29,5	15,0	63,0	32,0	29,0	135	222	184	1,26
16,0	32,0	28,3	29,5	17,0	63,0	32,0	29,0	135	222	184	1,25
19,0	39,0	34,7	36,1	20,0	76,0	37,0	33,0	162	264	219	2,27
22,0	43,0	37,8	39,4	24,0	89,0	43,0	38,0	189	308	257	3,40
25,0	50,0	44,2	45,7	27,0	102	52,0	44,0	216	349	292	5,08
29,0	57,0	50,5	52,1	30,0	114	59,0	51,0	243	387	324	7,17
32,0	64,0	56,8	58,4	34,0	127	65,0	57,0	270	438	365	10,4
35,0	71,0	63,2	65,0	37,0	133	65,0	57,0	297	479	400	14,1
38,0	78,0	69,6	71,4	40,0	140	71,0	63,0	324	518	432	17,7
44,0	86,0	75,9	77,7	47,0	171	91,0	76,0	378	610	508	23,6
51,0	100	88,6	90,4	54,0	197	97,0	83,0	432	698	584	40,8
57,0	113	100	102	60,0	219	110	102	486	756	632	55,3
63,0	125	111	112	67,0	219	110	102	498	791	667	64,4

